

# SPECIFICATIONS OF BATTERY

(September 2020)

## STD Type

Battery Voltage V	Battery Capacity AH/5HR	Manufacturer	Battery Cell			Container Height mm	Weight (w/case) kg	Model			
			Type	Length mm	Width mm			CBT4	Operating Time	CBT6	Operating Time
48	210	GS YUASA	VCF3C	90	158	575	395	●	11h55m		
		LIFTTOP	VCF210A	90	158	575	440	●			
	280	GS YUASA	VCF4N	90	158	575	445	●	16h00m	●	6h57m
		LIFTTOP	VCF280L	90	158	575	495	●		●	
	370	LIFTTOP	VCI370	90	158	575	585			●	9h25m
		GS YUASA	VGI370	90	158	575	540			●	

INDEX: ● Available

## Roll-out Type Battery

Battery Voltage V	Battery Capacity AH/5HR	Manufacturer	Battery Cell			Container Height mm	Weight (w/case) kg	Model			
			Type	Length mm	Width mm			CBT4	Operating Time	CBT6	Operating Time
48	216	GS YUASA	VCD4BN	94	157	500	365	●	12h16m	●	5h05m
	250	GS YUASA	VCD5AN	94	158	500	410	●	14h15m	●	6h06m
		LIFTTOP	VCD250	90	158	500	435	●		●	
	305	GS YUASA	VZE305	90	157	500	500	●	17h26m	●	7h40m

INDEX: ● Available

## Battery Connector Type

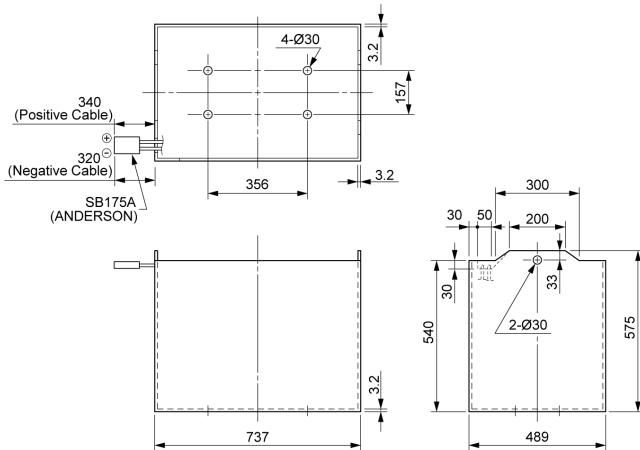
Battery	SB175A (ANDERSON)
---------	-------------------

## Dimensions of Battery Case

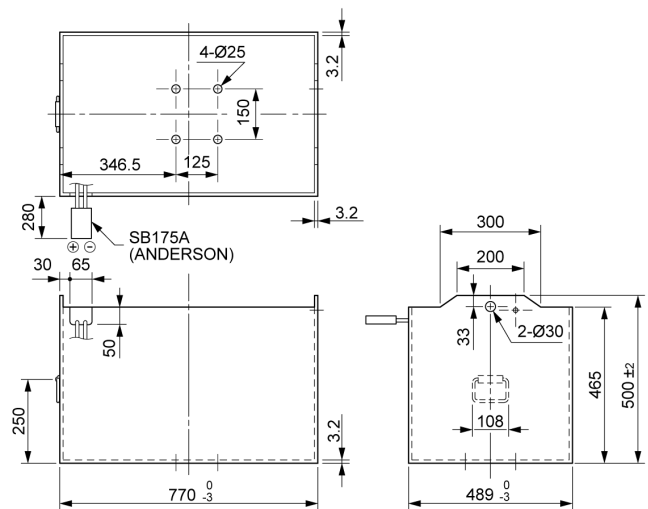
(April 2005)

Unit: mm

### STD Type



### Roll-out Type



## Dimensions of Battery Compartment

Model	CBT4.6	
Width	mm	745 (778)
Length	mm	497
Height	mm	594 (523)

NOTE: ( ) for Roll-out Type Battery.