

# 3TE25



## MAIN VEHICLE SPECIFICATIONS

Manufacturer			TOYOTA
Model			3TE25
Power Type			Battery
Operator Position			Rider Seated
Tire Type	Front/Rear		Pneumatic
Wheels (x = driven)	Front/Rear		2/2x
Maximum Drawbar Pull	3-Minute Ratings	N <kgf>	25100 <2500>
Rated Drawbar Pull (Towing Capacity)	60-Minute Ratings	N <kgf>	5300 <540>
Towed Weight	60-Minute Ratings	kg	27000
Travel Speeds	No Load	km/h	25
	9 Ton Load	km/h	21
	13.5 Ton Load	km/h	17.8
Gradeability *		degree	33
Overall Length	w/ Hitch	mm	3495
	w/o Hitch	mm	3265
Front Overhang		mm	455
Rear Overhang		mm	570
Overall Width		mm	1445
Overall Height	w/o Cabin	mm	1390
	w/ Cabin	mm	1940
Turning Radius (Outside)		mm	3200
Hitch Length		mm	230
Height of Hitch		mm	450
Wheelbase		mm	2240
Tread	Front	mm	1225
	Rear	mm	1190
Underclearance	Center of Wheelbase	mm	150
Floor Height		mm	500
Total Weight	w/ Battery	kg	4770
	Without Battery	kg	3210
Weight Distribution (With STD Battery)	Front	kg	1820
	Rear	kg	2950
Tires	Number	Front/Rear	2/2
	Size	Front	175R13-8PR (LT)
		Rear	28x8-15-12PR (I)
Brake	Service (Foot)		Hydraulic
	Parking (Hand)		Mechanical
Battery	Voltage/Capacity (5-Hour Ratings)	STD	V/AH
	Weight (STD Capacity Type)		kg
Electric Motor	Drive		80/620
Control Type	Drive		1560
			11.2 x 2
			Transistor inverter

NOTE: \* Computed values.

# TOWED WEIGHT

Unit: kg

3TE25		Level Start			Start on Grade		
Surface Condition (Dry Even Concrete) $\mu=0.02$		3-Minute Ratings (STD) *1	60-Minute Ratings *1	3-Minute Ratings (Rear pneumatic shaped cushion tire) *2	3-Minute Ratings (STD) *1	60-Minute Ratings *1	3-Minute Ratings (Rear pneumatic shaped cushion tire) *2
Level Road		27000	27000	27000	—	—	—
Grade (Degrees)							
1°		27000	12200	27000	27000	12200	27000
2°		27000	6800	27000	23900	6800	20800
3°		27000	4000	27000	19300	4000	16800
4°		24800	2300	22800	16000	2300	13900
5°		19900	1100	18300	13600	1100	11700
6°		16500	300	15000	11600	300	9900
7°		13800	—	12600	10000	—	8500
8°		11800	—	10700	8700	—	7300
9°		10100	—	9100	7600	—	6300
10°		8800	—	7800	6700	—	5500

NOTE:

\*1: Towed weight data is the same for one or more trailers.

When lock is released and set to H mode, the rated time for continuously towing the rated towed weight is reduced from 60 minutes to 20 minutes.

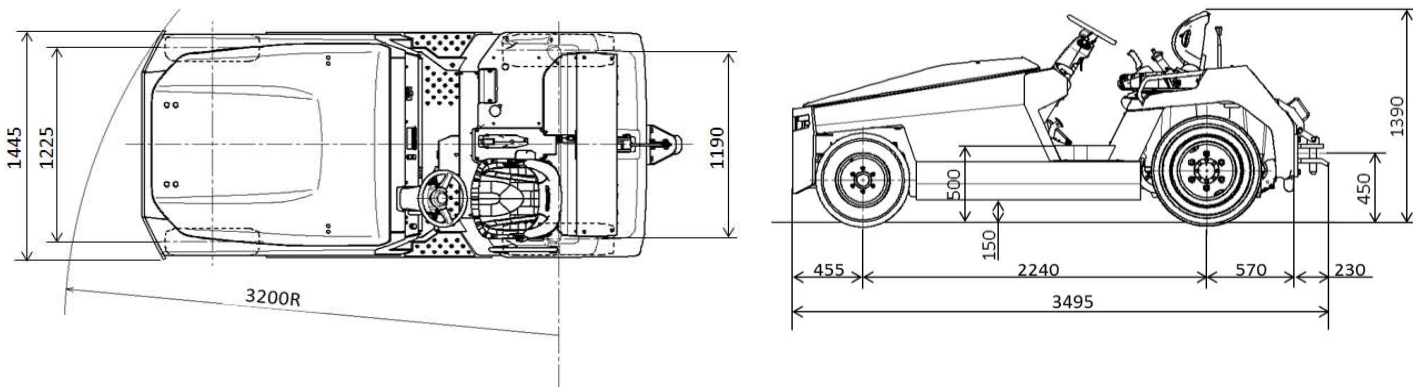
\*2: When equipped with Rear pneumatic shaped cushion tire, depending on the tire diameter and rolling resistance, the rated towed weight is different from that of vehicles with the Standard Spec.

Towed weight data is the same for one or more trailers. Data for 60-Minutes Ratings of this spec is the same as that of the Standard Spec.

## DIMENSIONAL DRAWINGS

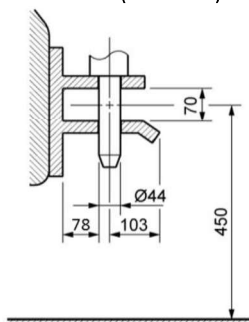
3TE25

Unit:mm

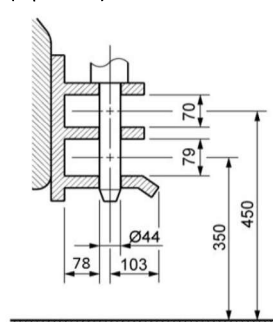


## DRAWBAR

Pin Type Single Stage Drawbar (Standard)



Pin Type Double Stage Drawbar (Optional)



Front Drawbar (Optional)

